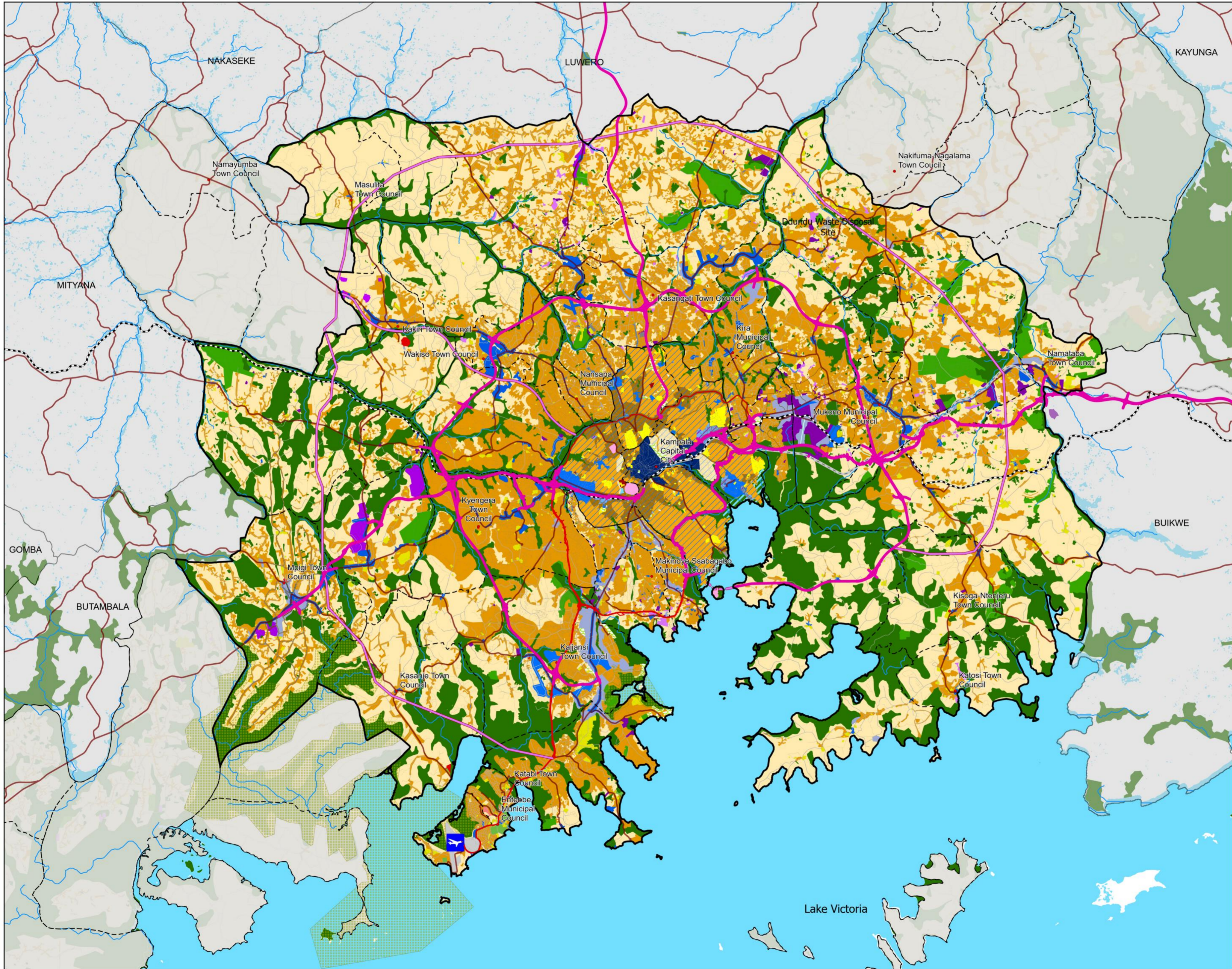
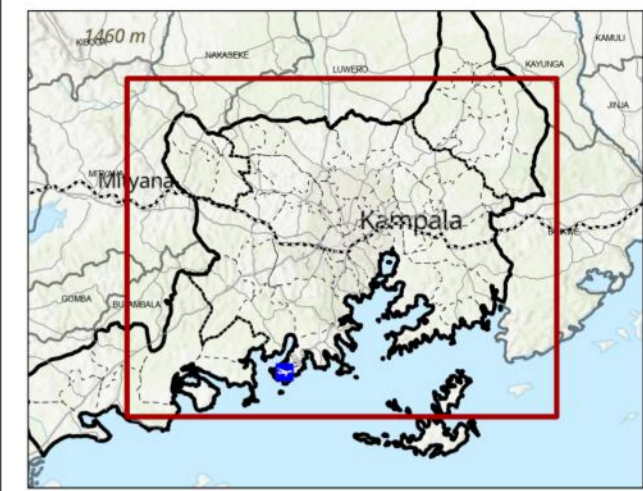


DRAFT GENERAL LAND USE PLAN FOR GKUGA (2050)



Legend

- Entebbe Airport
- Rivers
- Railway Network**
 - Railway Line
 - SGR Alignment
- Road Network**
 - Existing Expressways
 - New Expressways
 - National Road
 - District Roads
 - District Roads (for Upgrade)
 - Proposed Secondary Road

Protected Areas

- Ramsar Sites
- Environmental

Landuse Category

Landuse Category

Outside KCC

- Industrial Areas
- Agriculture
- Existing Civic
- Commercial
- Commercial Agriculture
- Extractive/Quarry
- Infrastructure and Utilities
- Existing Institutional
- Mixed use
- Residential Areas
- New Residential Areas
- Water Bodies

Within KCC

- CBD
- Commercial Zone
- Institutional
- Mixed Use (Commercial and Industrial)
- Mixed Use - High Density (Comm and Residential)
- Mixed Use - Medium Density (Comm and Residential)
- Mixed Use - Low Density (Comm and Residential)
- Historic, Traditional and Cultural Zones
- Protected Water Front Zone
- Tourism and Recreation

Project:

The Project for Integrated Urban Development
Master Plan for Kampala Special Planning Area
(GKMA-IUDMP)

Japan International Cooperation Agency (JICA)
Oriental Consultants Global Co., Ltd
Yachiyo Engineering Co., Ltd.
PACET Corporation
PASCO Corporation

